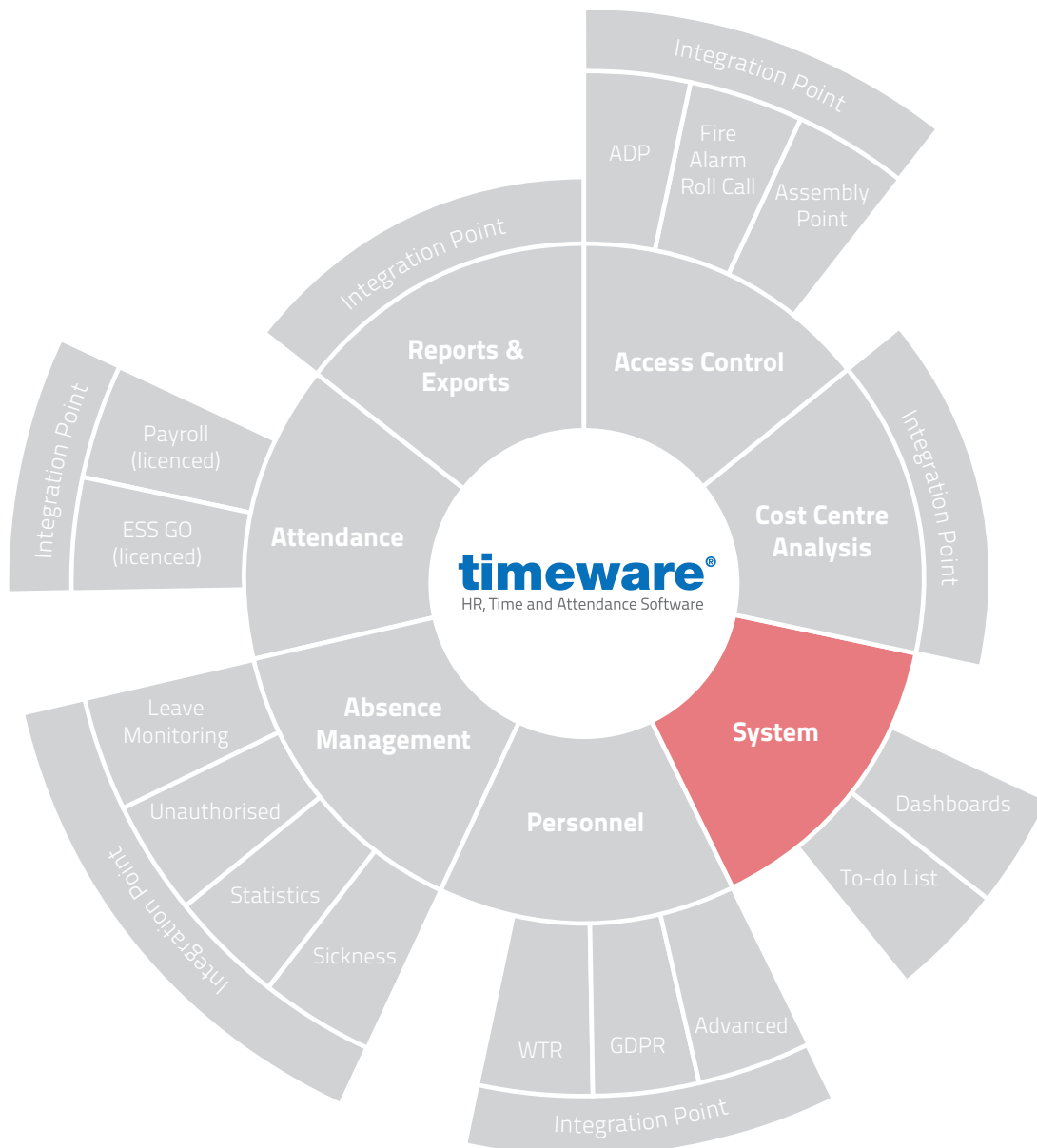


timeware® Professional software installation



Certificate No:
491342025

Company Name: timeware (UK) Ltd.

Registered Office: 3 Fieldhouse Road, Rochdale,
Greater Manchester, OL12 0AD.

Company Reg. No: 05886806.

Registered in: England.

t2-0476: Copyright NMD³ Ltd

www.timeware.co.uk
support@timeware.co.uk
+44 (0) 1706 658222

Contents:

Page

- 3. Installing Microsoft OLE DB Driver.
- 5. Installing timeware® Professional.
- 13. Key Information.

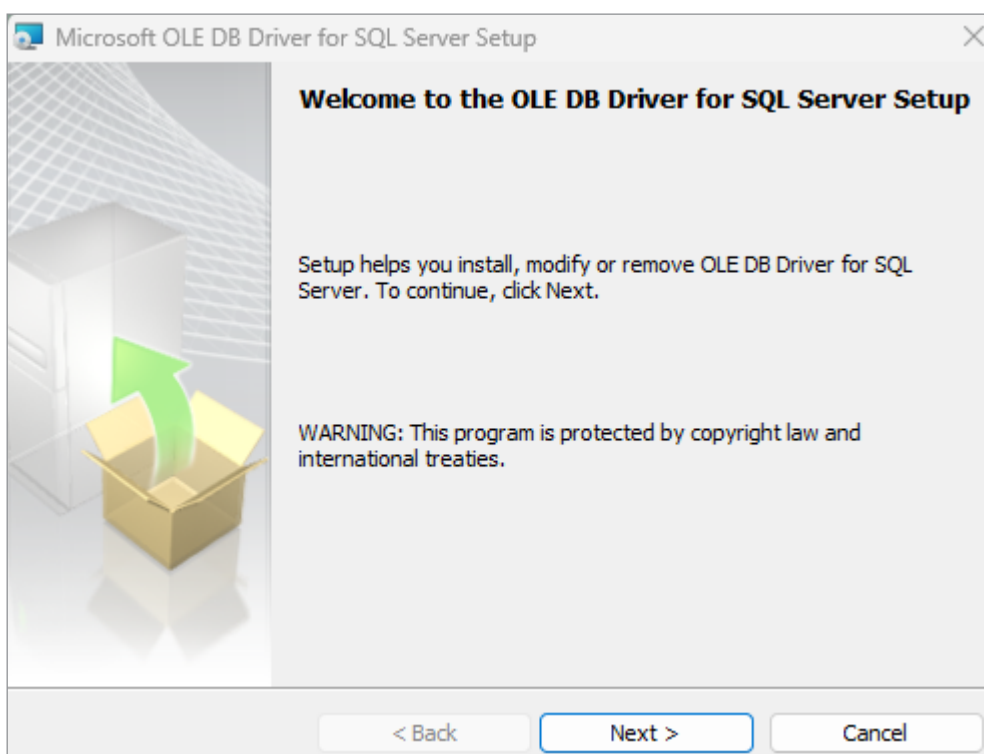
DISCLAIMER

All the specifications made within this document are guides to follow, and may vary on a customer to customer basis. For further assistance, please contact timeware® support on 01706 658 222.

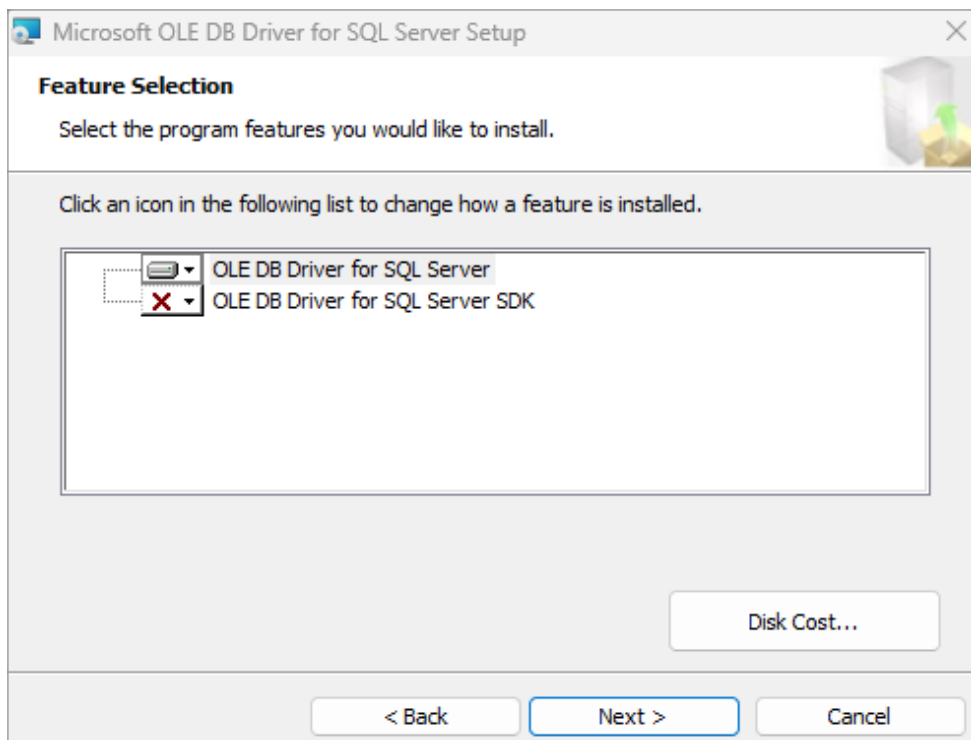
Installing Microsoft OLE DB Driver for SQL Server

To install Microsoft OLE DB Driver for SQL Server you will first need to download this from <https://www.nmd3.com/software-repository.php>

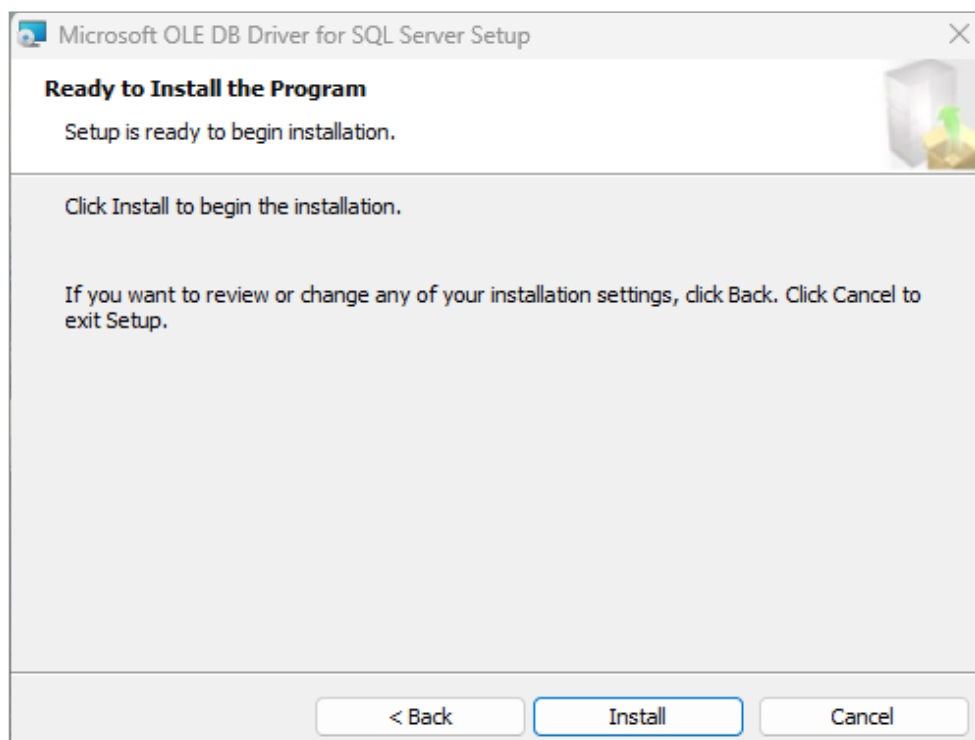
Once downloaded, right click and 'Run as Administrator'.



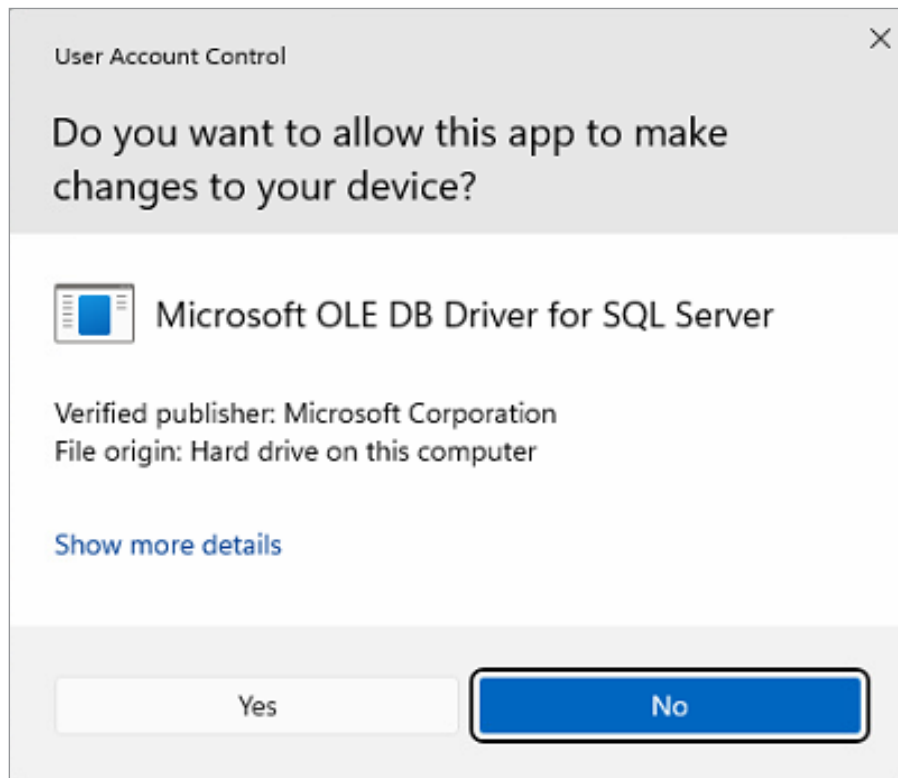
Click 'Next' and then Accept the terms in the license agreement and hit 'Next' again. Once you get to the screen below you will need to click 'Next' once again.



You will then be prompted to 'Install', once this has been clicked



Windows may then prompt you and ask if you want to allow this app to make changes to your PC. You can click Yes and then Microsoft OLE DB Driver will install and once this has finished you are able to move on to the next step.



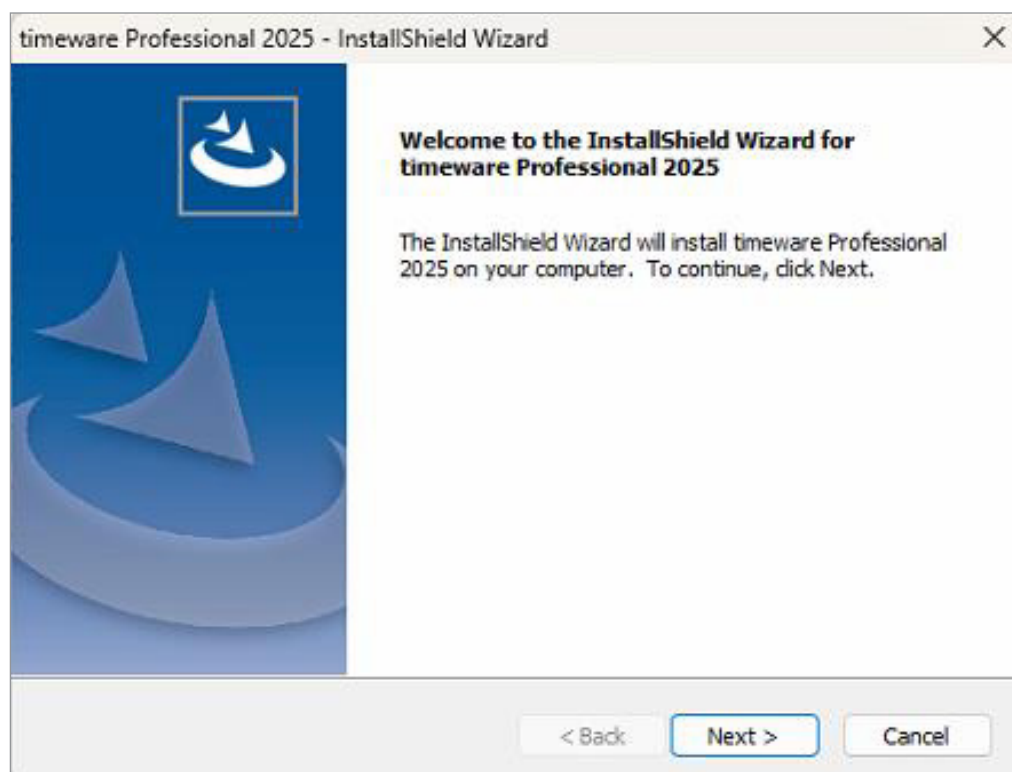
Installing timeware® Professional.

Note: If you are trying to upgrade the version of timeware®, you will need to remove the old version from the PC before you can begin installing the latest version.

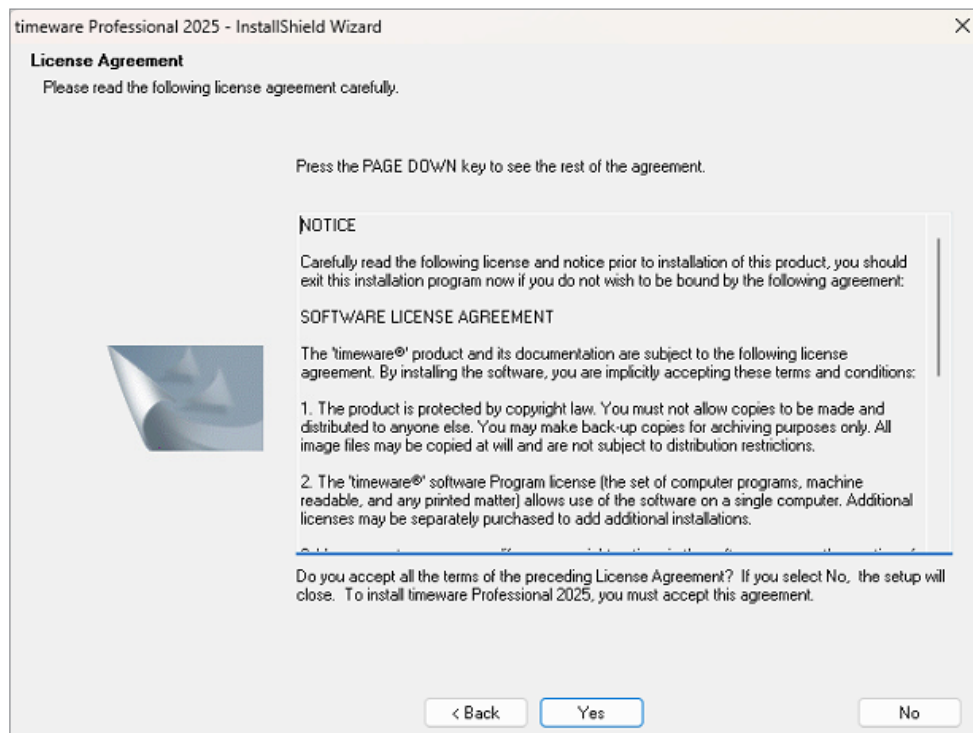
To install timeware® you will first need to download the latest version of timeware® Professional from <https://www.nmd3.com/software-repository.php>

Once the timeware® installer has finished downloading, you will then need to run the installer as administrator. **(Note: It is important to run the installer as administrator to avoid errors occurring with the install)**

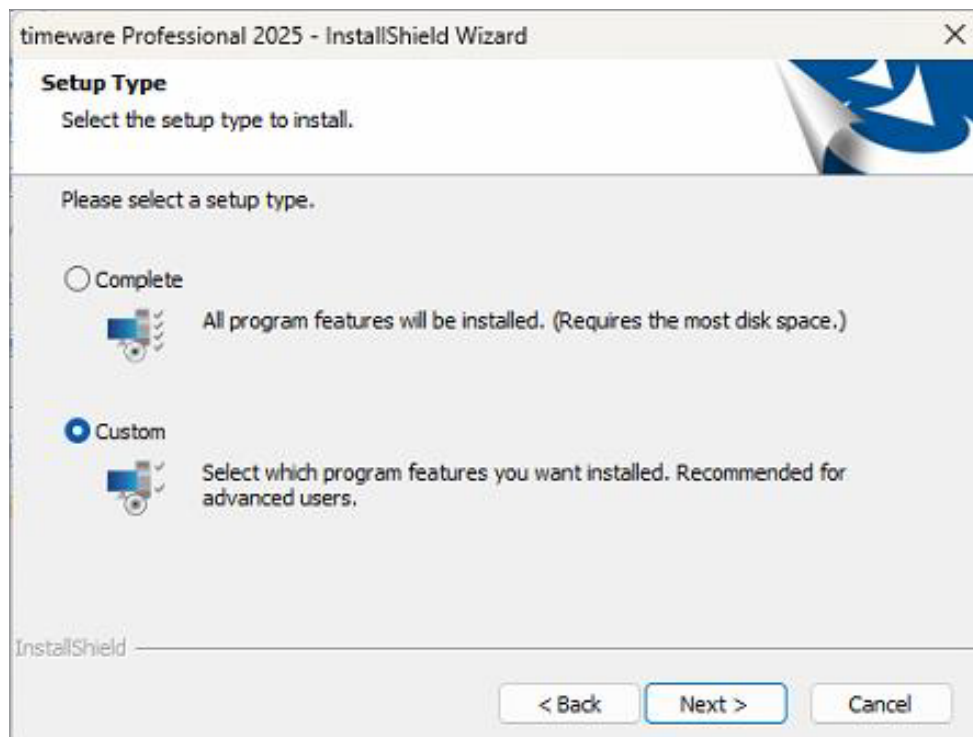
Once the installer opens, you will be greeted with a wizard page where you will need to select "Next"



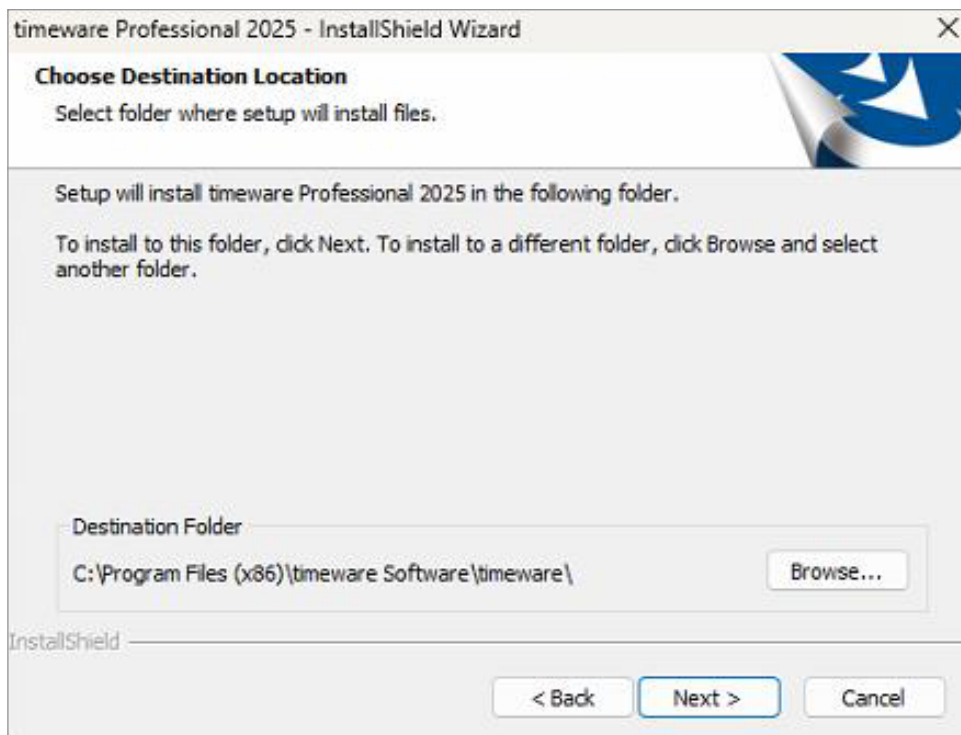
Next is the user agreement, which you will need to read through before selecting "Yes"



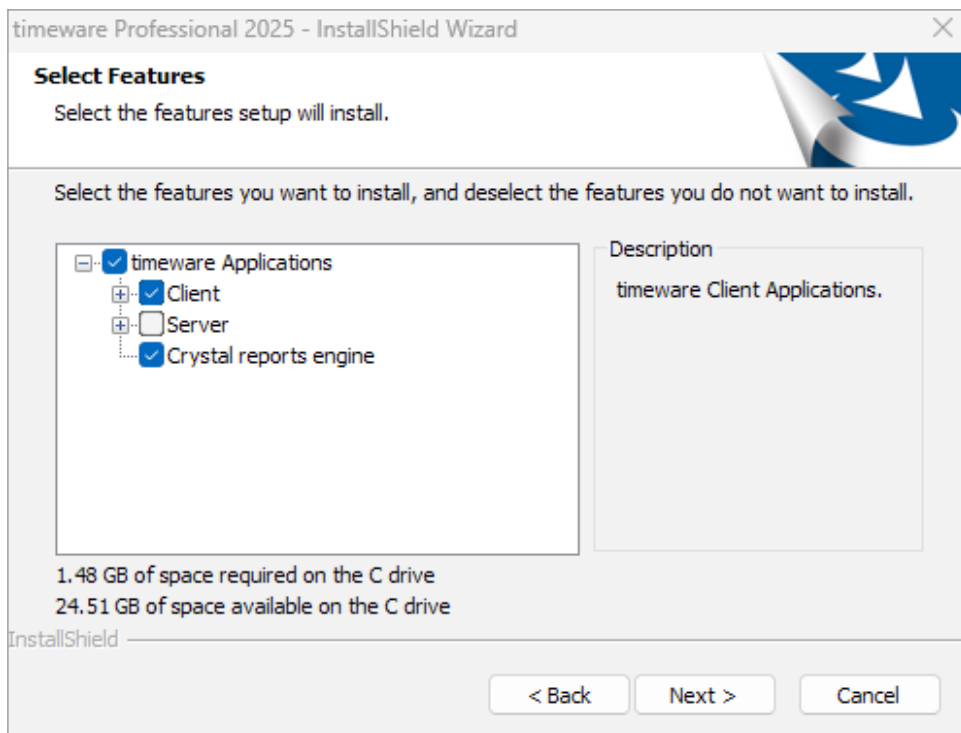
Then there will be a setup type that you will need to select, for installing on a server you will need to select the "Custom Option" before selecting "Next"



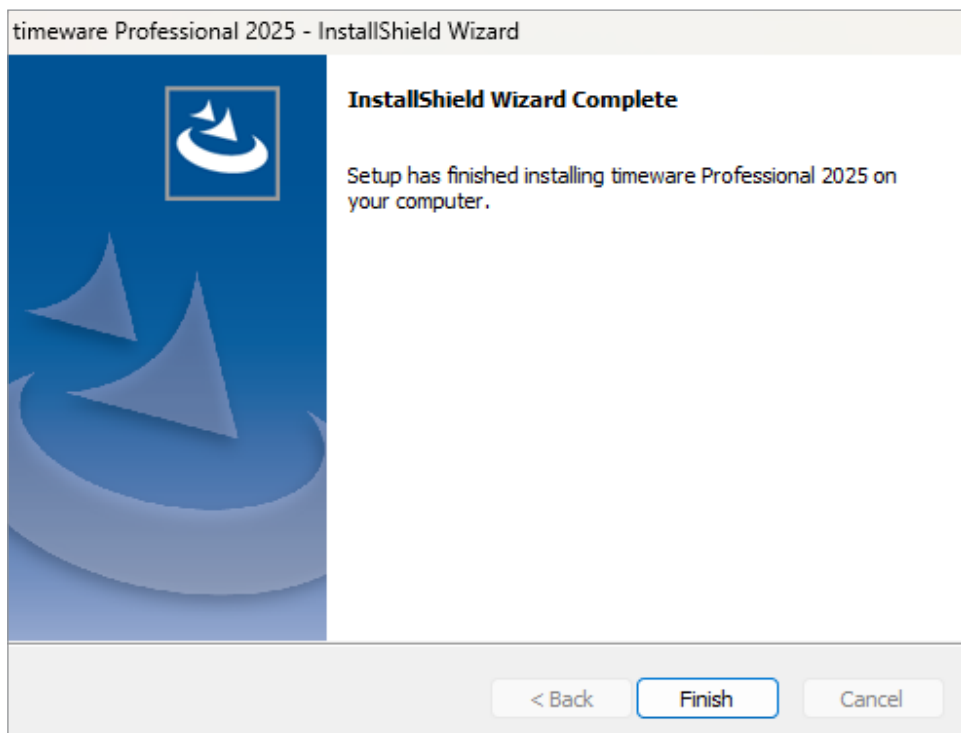
After selecting the type of setup, you will then need to confirm by clicking "Next" and timeware® will begin installing onto your computer after you have selected a location you would like the software installing.



Then you will be presented with a features option, for this step you will need to select 'Client' and UNCHECK the server option.



Once you have selected this option, timeware® will now begin to install.
Once the installation is completed, you will be presented with this screen.



Key Information:

Database Connection Information:

You will need to make sure there is a 'SQLConnection.ini' file located in (default path) C:\Program Files (x86)\timeware Software\timeware\TData if there is no 'SQLConnection.ini' in here, you will be able to get this from the same location above on a working client machine or the timeware® application server.